

EXTENSION FOR "GLACIER PRO ATV" PLOW FRAME KIT

P/N 2879719

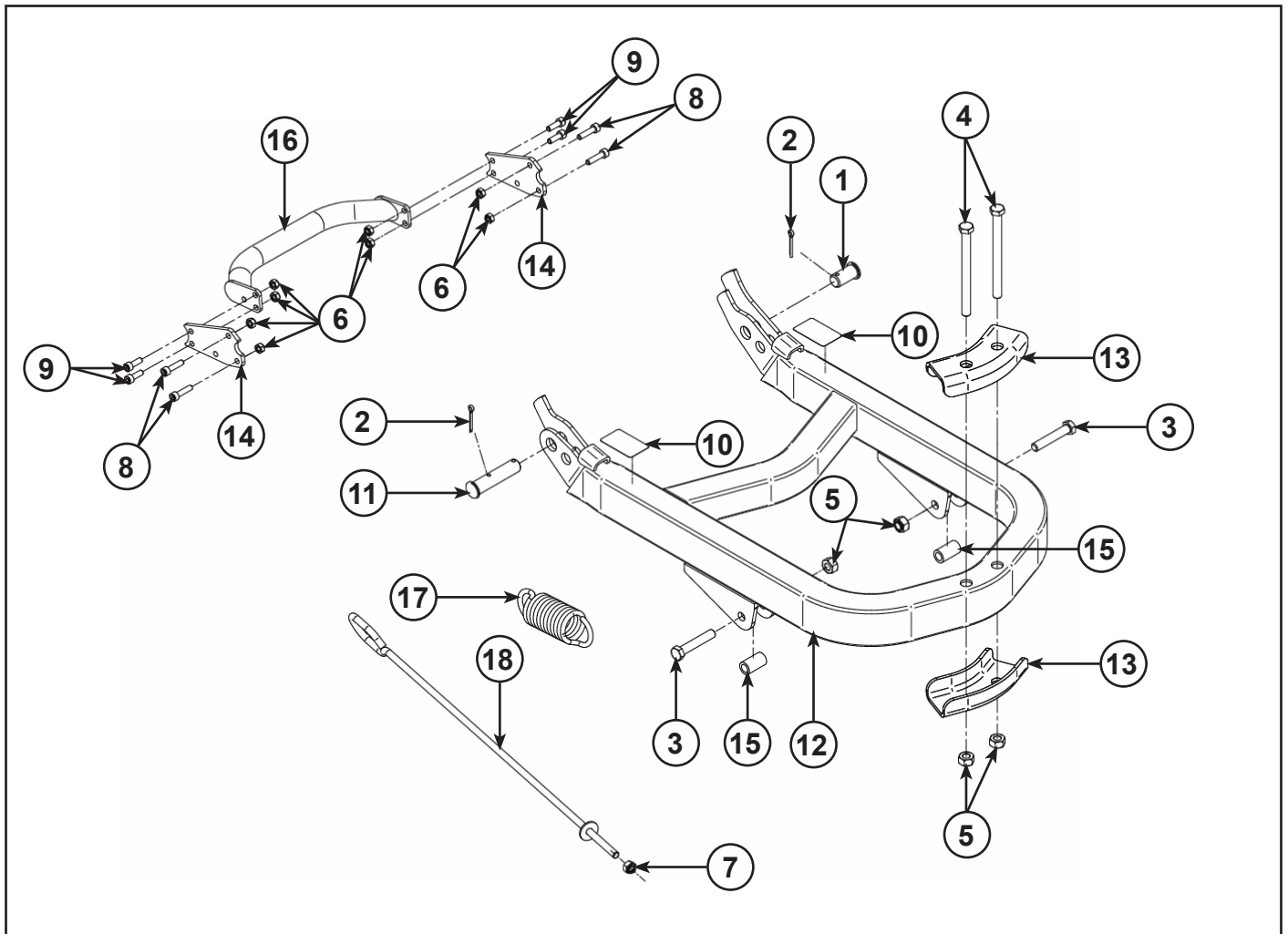


POLARIS[®]

Application

GLACIER PRO ATV PLOW FRAME (PN 2879630)

Before you begin, read these instructions twice and check to be sure all parts and tools are accounted for. The following instructions contain details required to install the contents of this kit.



Kit Contents:

Ref	Qty	Part Description	Part Number
1*	1	Ø16 mm x 30 mm Clevis Pin	-
2*	2	Ø3 x 25 mm cotter Pin	-
3*	2	M10-1.5 x 50 mm Hexagonal Bolt	-
4*	2	M10-1.5 x 120 mm Hexagonal Bolt	-
5*	4	M10-1.5 Hexagonal Nylon Nut	-
6*	8	M6-1.0 Hexagonal Nylon Nut	-
7**	1	M8-1.25 Hexagonal Nylon Nut	-
8*	4	M6-1 x 25 mm Socket Head Cap Screw	-
9*	4	M6-1 x 18 mm Socket Head Cap Screw	-
10	2	Warning Decal	-
11*	1	Ø16 mm x 70 mm Clevis Pin	-
12	1	Extension Frame	-
13	2	Extension Clamp	-
14	2	Extension Plate	-
15*	2	Frame Sleeve	-
16	1	Hook Up Extension	-
17	1	Spring	-
18**	1	Winch Link	-
	1	Instructions	9924942

Item marked (*) are included in Hardware Kit PN 2205215.

Item marked (**) are included in Link Kit PN 2205463.

Tools Required:

10 mm, 15 mm and 17 mm Open-End Wrenches and Sockets
5 mm Allen Key, and Long Nose Pliers

APPROXIMATE ASSEMBLY TIME: 30 minutes

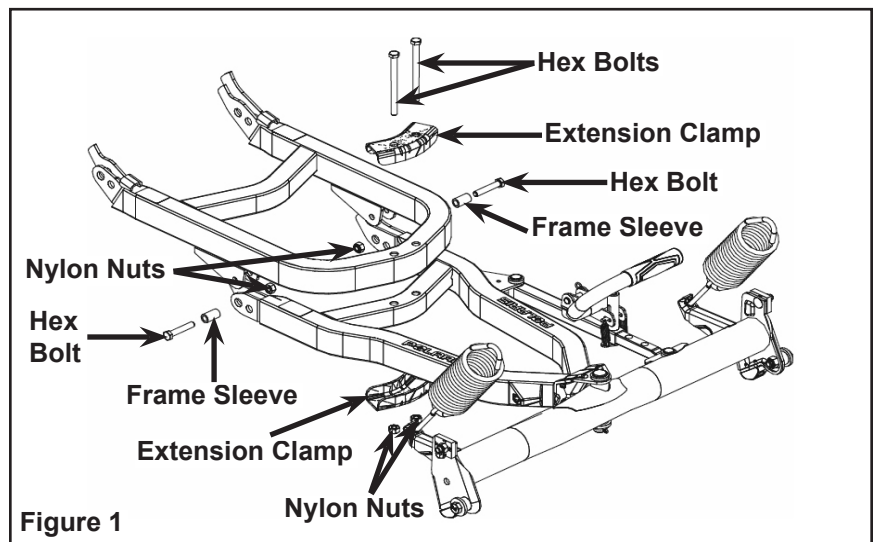
IMPORTANT: Your Polaris accessory is exclusively designed to work with Glacier Pro ATV Plow System. Before beginning, please read these instructions and make sure that all parts and tools are at your disposal. Keep these instructions for future reference or for any information requests. To facilitate installation, make sure that your plow system is clean and free of debris.

INSTALLATION INSTRUCTIONS:

IMPORTANT: Polaris winch must be installed first. It is strongly suggested that your ATV front suspension setup be changed to the stiffest setting.

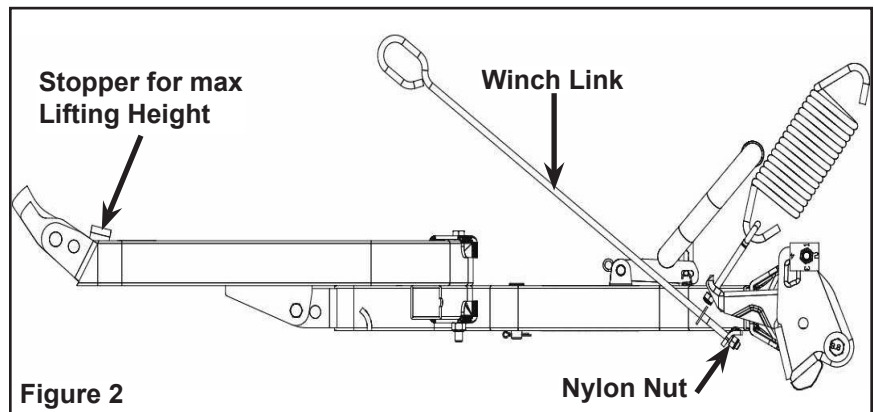
PUSH FRAME EXTENSION:

1. Position push frame (PN 2879630) under the extension. Figure 1. Insert two frame sleeves inside the rear mounting holes of the frame. Fasten the extension using two M10-1.5 x 50 mm hex. Bolts and two M10-1.5 hex. Nylon nuts.
2. Position and fasten the two extension clamps using two M10-1.5 x 120 mm hex. Bolts and two M10-1.5 hex. Nylon nuts.



WINCH LINK ASSEMBLY:

3. The original winch link must be replaced by the new longer winch link and M8-1.25 hex. Nylon nut supplied with the extension kit.
 - a. Install winch link with nylon nut until only two threads are showing after the nut. Figure 2.
 - b. Lift the frame using the winch until the winch stops itself (if you use a winch with an automatic stop switch) or until the winch hook comes into contact with the roller fairlead.
 - c. Try to lift the blade by hand. If the blade can be lifted, the nut must be tightened. Tighten until the blade is at the maximum height (maximum height is reached when the stoppers on the extension frame are in contact with the plates of the quick-attach mechanism).



HOOK UP ASSEMBLY:

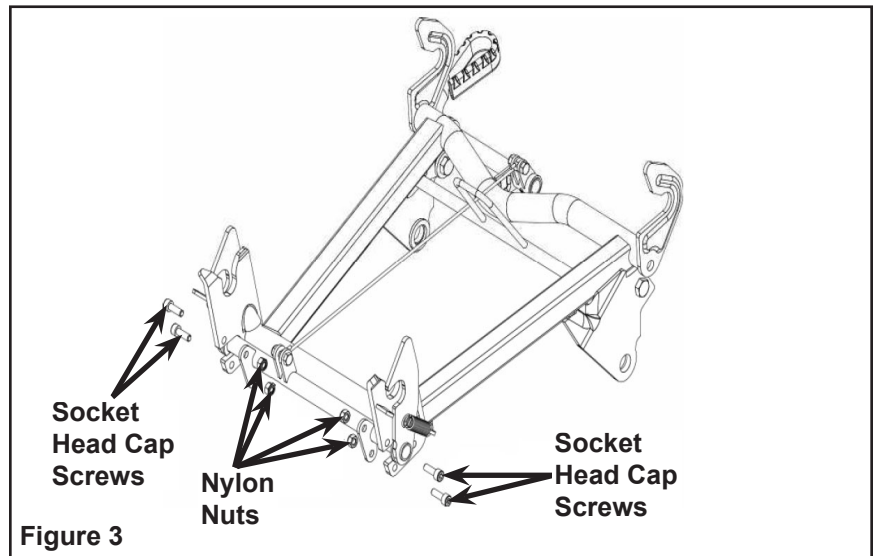
4. Refer to the mount plate installation guide for instructions. Hook up assembly must be assembled to extension brackets instead of push frame brackets.
5. If there is a tension spring with steel cable and eyebolt assembly in your mount plate kit, replace the original tension spring by the new spring supplied in the extension kit. Refer to your mount plate installation guide to get installation instructions.

HOOK UP EXTENSION ASSEMBLY:

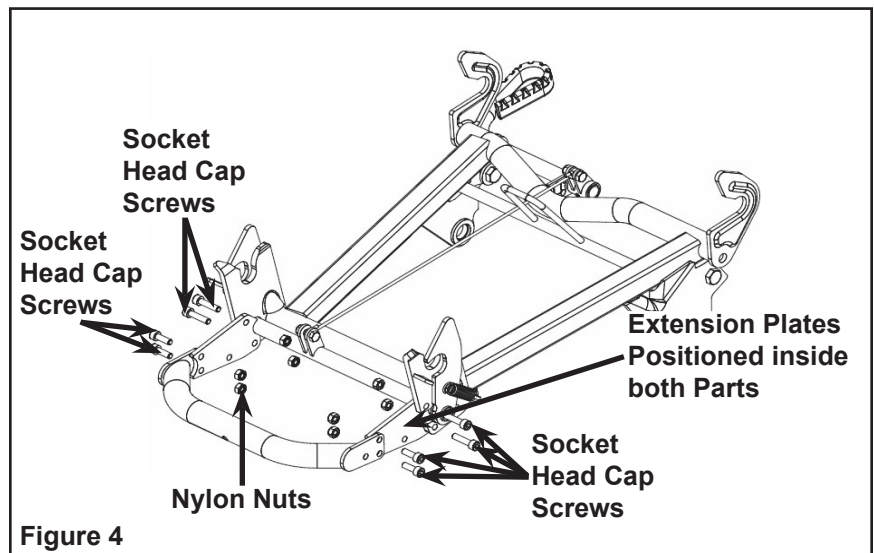
There are two different configurations depending on the vehicle. Position the hook up extension in the correct configuration according to the vehicle.

Hook up extension for Sportsman XP mount plate kit (P/N 2879632):

6. Remove four M6-1 x 18 mm socket head cap screws, four M6-1.0 hex. Nylon nuts and two half lock plates from the hook up. Figure 3.

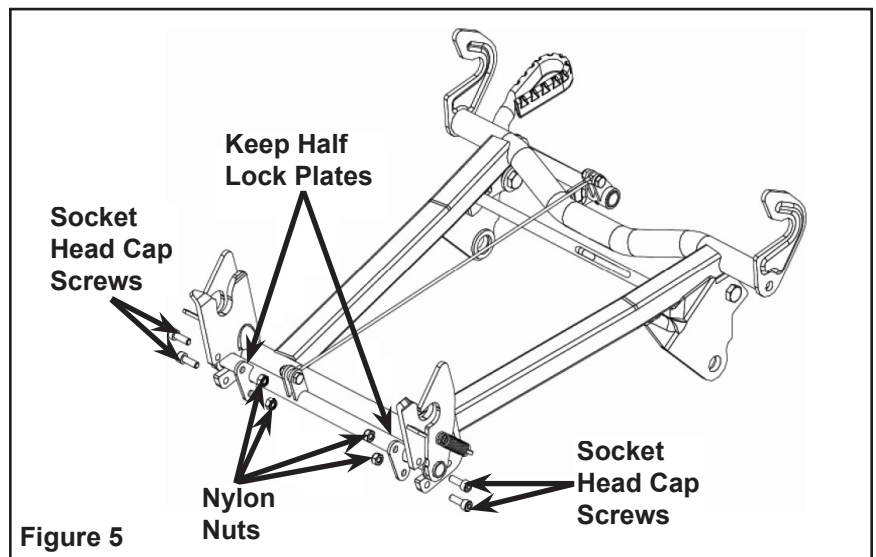


7. Fasten the hook up extension and extension plates using four M6-1 x 25 mm socket head cap screws, four M6-1 x 18 mm socket head cap screws and eight M6-1.0 hex. Nylon nuts. Figure 4.

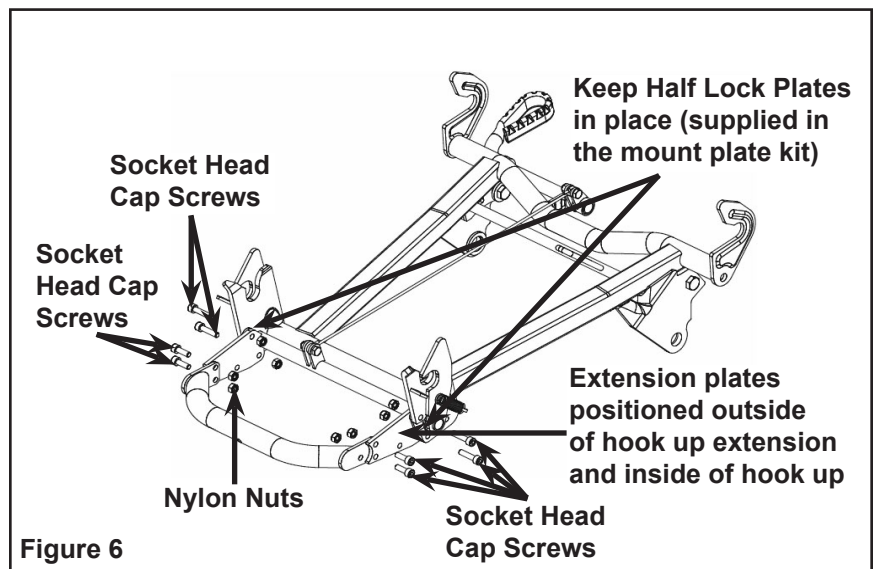


Hook up extension for Sportsman Non-XP mount plate kit (P/N 2879633):

6. Remove four M6-1 x 18 mm socket head cap screws and four M6-1.0 hex. Nylon nuts. Keep the two half lock plates from the hook up; they must be reinstalled. Figure 5.



7. Fasten the hook up extension and extension plates using four M6-1 x 25 mm socket head cap screws, four M6-1 x 18 mm socket head cap screws and eight M6-1.0 hex. Nylon nuts. Figure 6.



SPARE KITS

REF.	DESCRIPTION	Hardware Kit (2205215)	Winch Link Kit (2205463)
1	Ø16 mm x 30 mm clevis pin	1x	
2	Ø3 x 25 mm cotter pin	2x	
3	M10-1.5 x 50 mm hexagonal bolt	2x	
4	M10-1.5 x 120 mm hexagonal bolt	2x	
5	M10-1.5 hexagonal nylon nut	4x	
6	M6-1.0 hexagonal nylon nut	8x	
7	M8-1.25 hexagonal nylon nut	1x	1x
8	M6-1 x 25 mm socket head cap screw	4x	
9	M6-1 x 18 mm socket head cap screw	4x	
10	Warning decal		
11	Ø16 mm x 70 mm clevis pin	1x	
12	Extension frame		
13	Extension clamp		
14	Extension plate		
15	Frame sleeve	2x	
16	Hook up extension		
17	Spring	1x	
18	Winch link		1x