

# GLACIER PRO RANGER MID SIZE MOUNT KIT

P/N 2880261



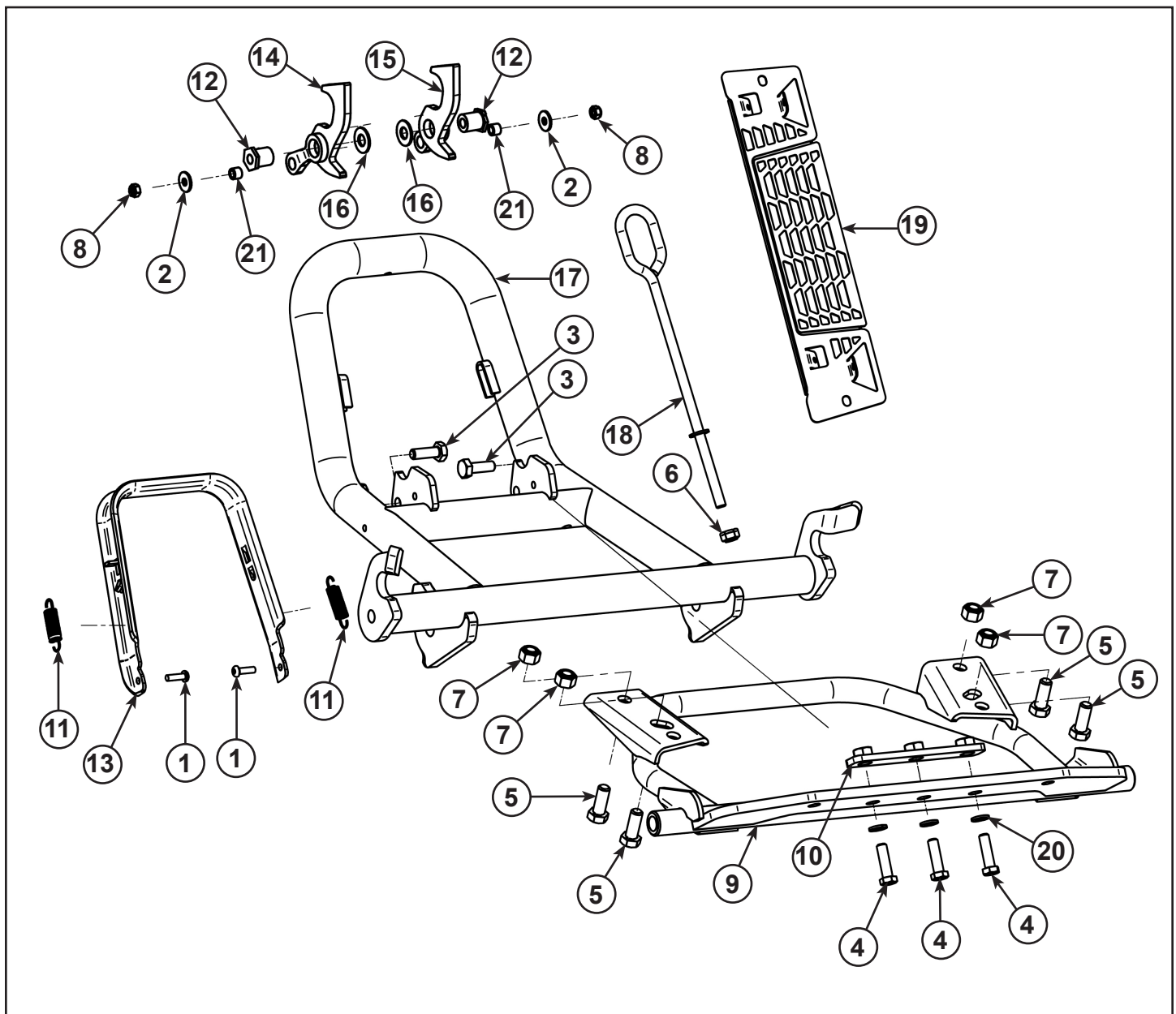
## APPLICATION

FOR USE WITH THE GLACIER PRO MID SIZE PLOW SYSTEM (P/N 2880260) ON 2010 AND NEWER RANGER MID SIZE MODELS

## BEFORE YOU BEGIN

Read these instructions thoroughly and make sure all parts and tools are accounted for. Please retain these installation instructions for future reference and parts ordering information.

## KIT CONTENTS



Spare Kits								
Ref	Description	Plow Kit (2880261)	Plow Release Handle Kit (2204828)	Mount Plate Kit (2879105)	Plow Mount Hardware Kit (2204831)	Grille Kit (5257056)	Winch Link Kit (2205057)	Mid Mount Kit (2205418)
1	Button Head Socket Cap Screw, M6-1.0X20mm	2x	2x					
2	Flat Washer, M6	2x	2x					
3	Hexagonal Bolt M10-1.5X30	2x	2x					
4	Hexagonal Bolt, M10-1.5X35	3x		3x	3x			
5	Hexagonal Bolt, M12-1.75X30	4x		4x	4x			
6	Nylon Nut, M10-1.5	1x					1x	
7	Nylon Nut, M12-1.75	4x		4x	4x			
8	Nylon Nut, M6-1.0	2x	2x					
9	Welded Mount Plate	1x		1x				
10	Threaded Support	1x		1x	1x			
11	Tension Spring	2x	2x					
12	Hook Bushing	2x	2x					
13	Handle	1x	1x					
14	Right Hook Assembly	1x	1x					
15	Left Hook Assembly	1x	1x					
16	Hook Shim	2x	2x					
17	Hook Up	1x						1x
18	Mid Size Winch Link	1x					1x	
19	Grille	1x		1x		1x		
20	Lock Washer, M10	5x		5x	5x			
21	Handle Sleeve	2x	2x					
	Instructions (P/N 9925214)	1x						

## TOOLS NEEDED

17 mm and 19 mm Sockets and Open-end Wrenches, Long Nose Pliers, Cutters, T27 Torx Socket

**NOTE:** Not using the proper winch or winch accessory will lead to premature failure of the winch cable.

## APPROXIMATE ASSEMBLY TIME

30 mins.

## IMPORTANT

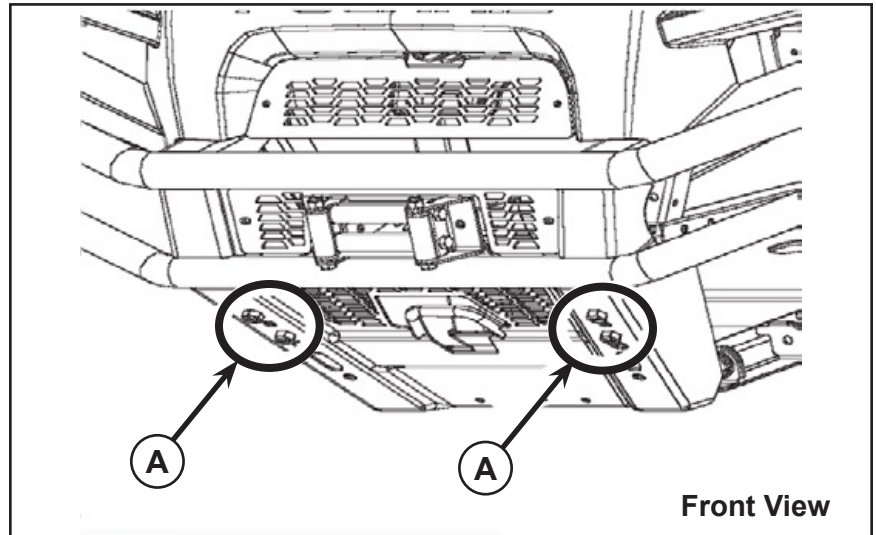
Your Polaris GLACIER PRO RANGER MID SIZE MOUNT KIT is exclusively designed for your vehicle. Please read the installation instructions thoroughly before beginning. Installation is easier if the vehicle is clean and free of debris. For your safety, and to ensure a satisfactory installation, perform all installation steps correctly in the sequence shown.

## INSTALLATION INSTRUCTIONS

**IMPORTANT:** The use of a Pro HD 4500 lb. winch or a Polaris winch with the combination of a Pro HD auto-stop and synthetic winch rope are recommended for use with this plow system to prevent premature failure of the winch cable. The winch should be installed on the unit prior to installing this kit.

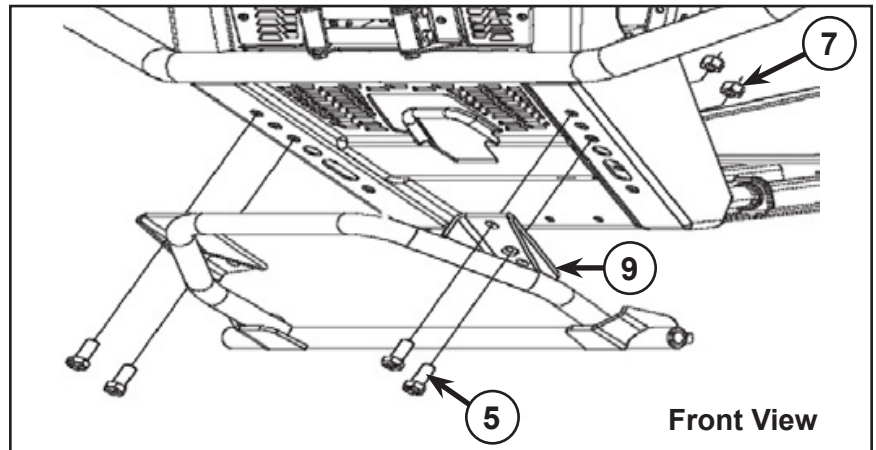
### INSTALLATION WITH WINCH INSTALLED:

1. Remove the four existing bolts (A) as illustrated.



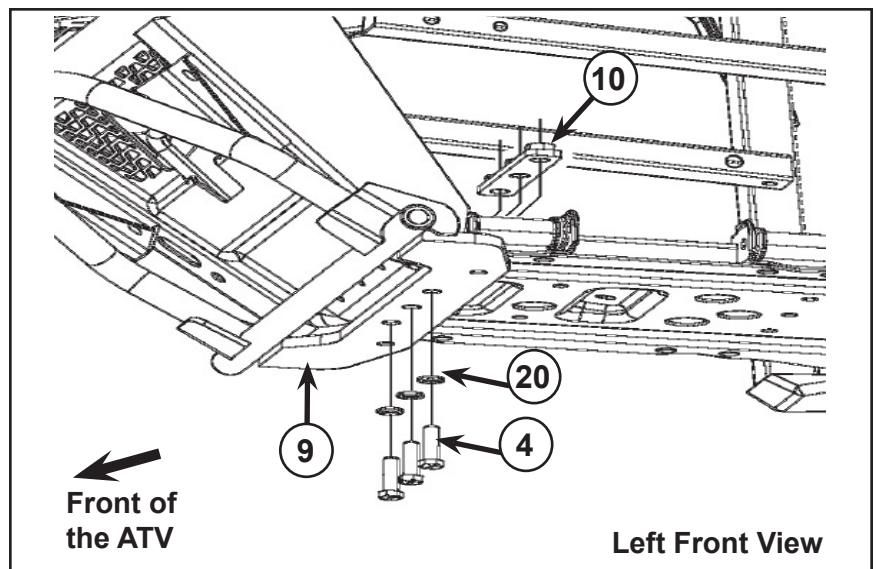
2. Fasten the upper part of the mount plate (9) to frame using the four M12-1.75 X 30 mm hex bolts (5) and four M12-1.75 nyloc nuts (7) (finger tighten at this time).

**NOTE:** Be sure to use the correct mounting holes.



3. Fasten the lower part of the mount plate (9) to frame using the three M10-1.5 X 35 mm hex bolts (4) and three M10 lock washers (20), and the threaded support (10). Tighten all bolts and nuts.

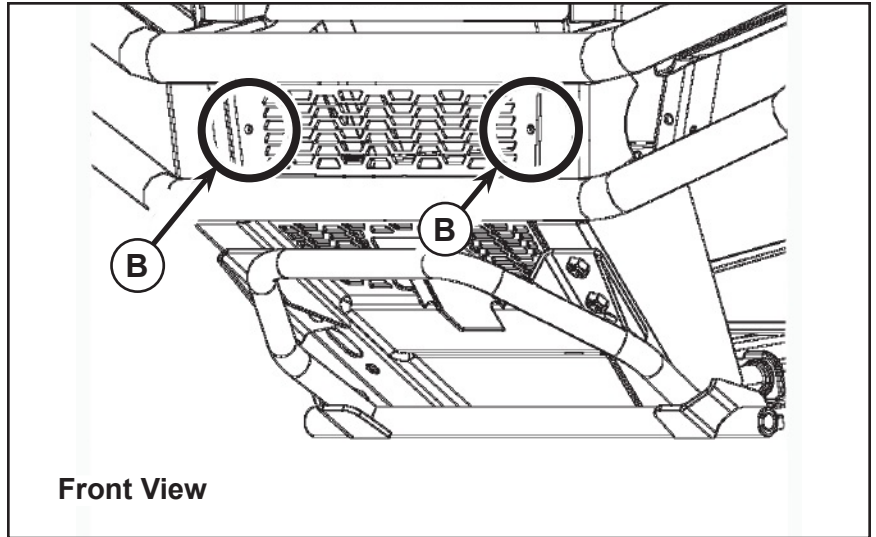
**NOTE:** Be sure to use the correct mounting holes.



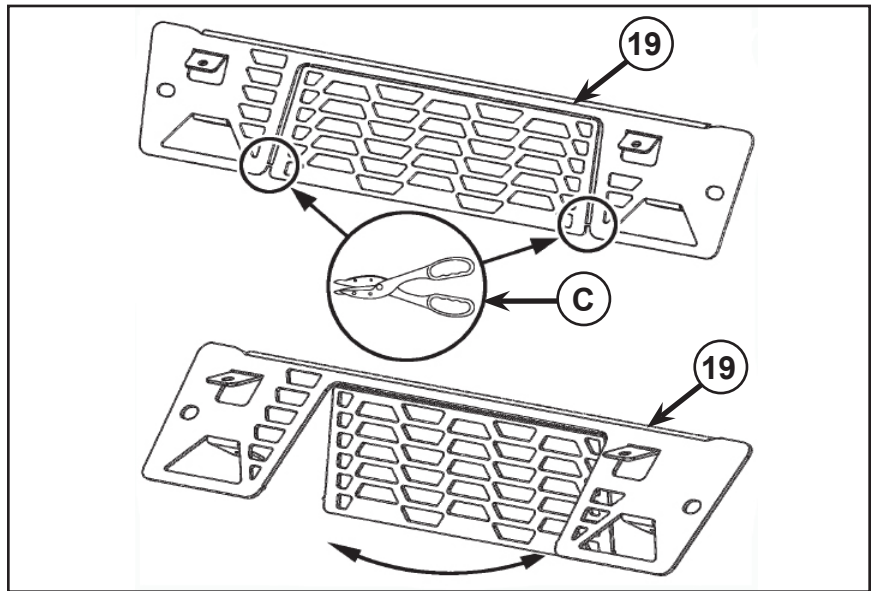
## GRILLE INSTALLATION:

To allow the installation of an hydraulic angle system, a new front grille (19) is included in this kit.

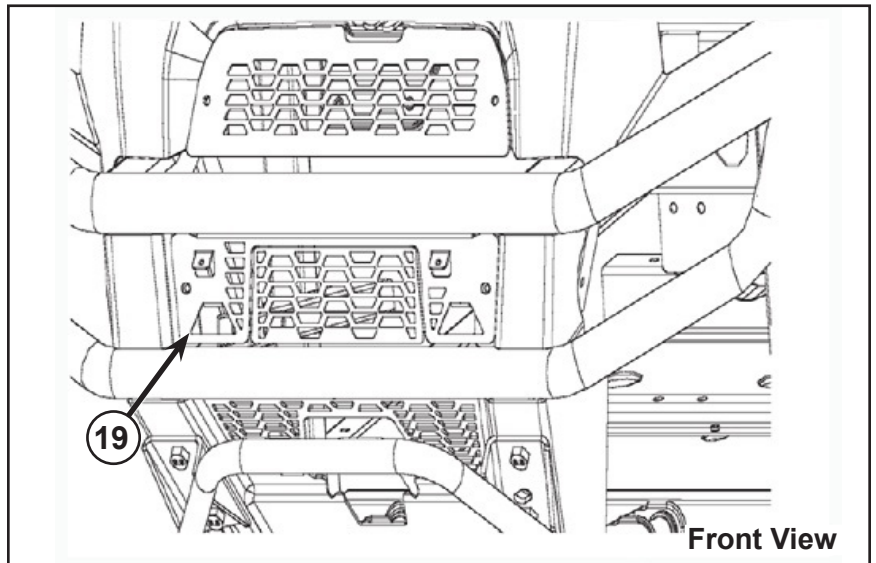
4. Remove the roller guide if installed.
5. Use a T-27 to remove the stock grille from the unit. Retain the hardware (B) for use later.



6. Remove the central part of the new grille (19):
  - a. Using cutter (C), cut the two clips on the lower part of the new grille (19).
  - b. Fold the central part of the new grille (19) from front to rear until it is completely removed.



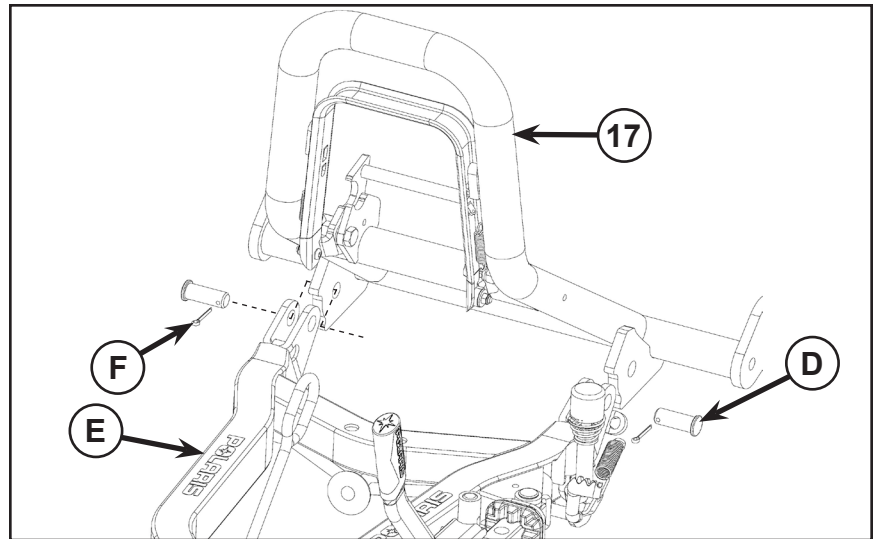
7. Install the new grille (19) to vehicle using the existing bolts removed in step 6.



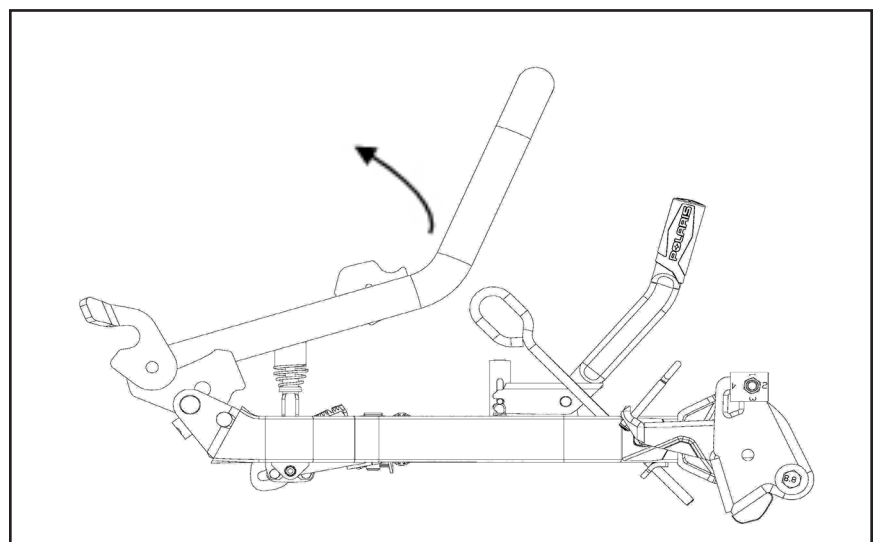
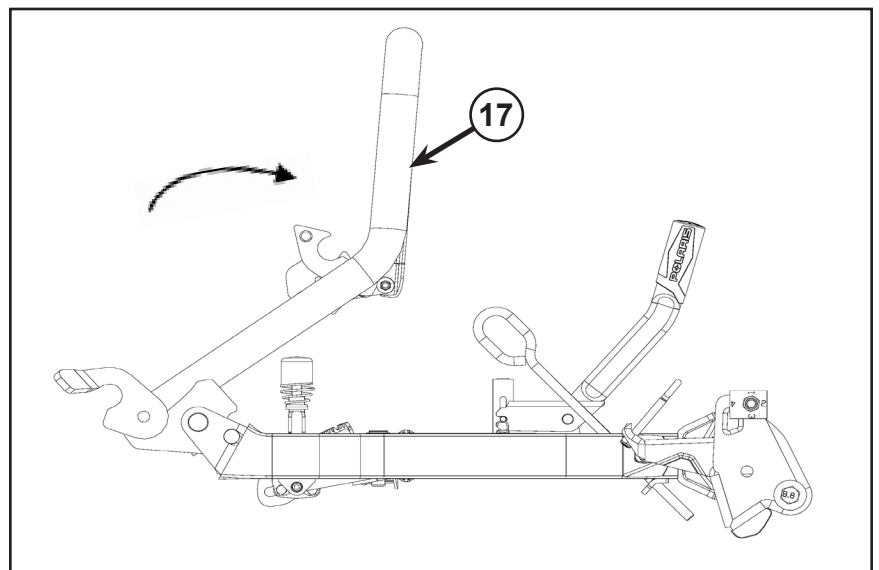
8. Reinstall the roller guide using the original hardware.

## HOOK UP ASSEMBLY:

9. Position the hook up (17) and insert two hook up pins (D) into the mounting holes of the pushframe (E).
10. Insert the two 3mm dia. X 25mm cotter pins (F) and fold the ends so they cannot be removed.



**NOTE:** Make sure the hook up (17) can move as shown in the picture. If this is not the case, remove the clevis pins (D) and reposition the handle so the stops function correctly.



## PUSHFRAME INSTALLATION AND REMOVAL:

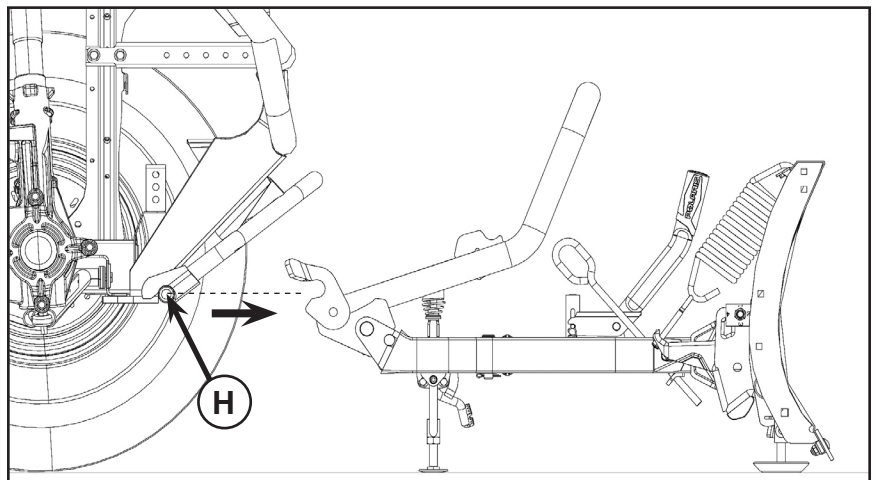
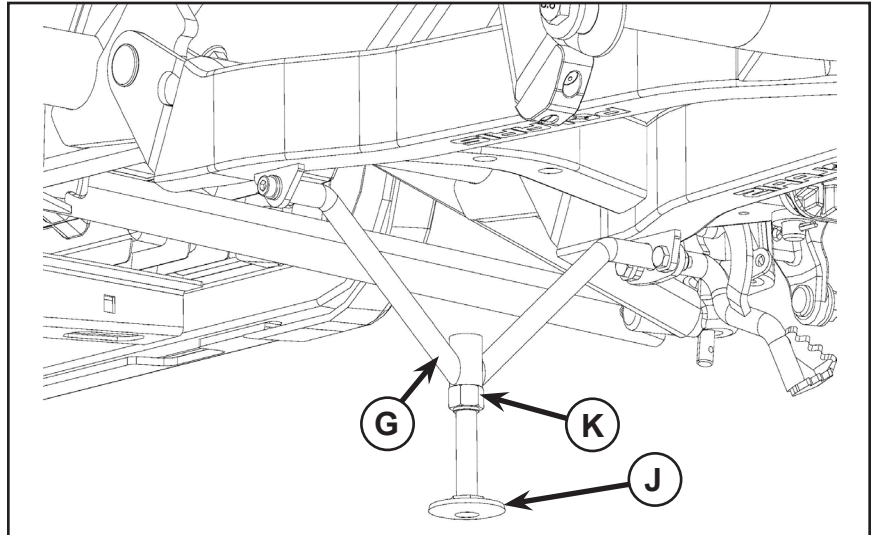
**NOTE:** The first installation requires you to adjust the height of the kickstand (G) depending on the ground clearance of your vehicle. It may be necessary to repeat the exercise if you add accessories to your vehicle that affect the ground clearance.

**NOTE:** If the vehicle is too low, you may need to adjust the vehicle height by changing the adjustment of the front suspension. Refer to vehicle manual for the adjustment method.

## HEIGHT ADJUSTMENT OF THE KICKSTAND:

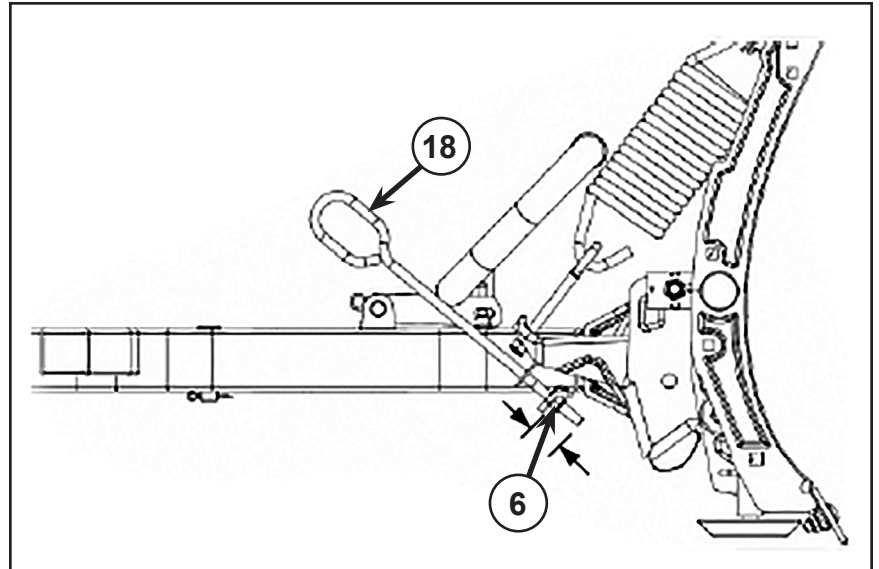
The kickstand (G) must support the push frame so the opening of the hook up aligns with the mount plate pin for easy installation and removal of the plow system. Loosen the jam nut (K) and screw the kickstand shoe (J) in or out to achieve the desired height. Check the height to make sure the hook up opening and the mount plate pin are aligned. Tighten the jam nut (K) to secure the kickstand in place.

**NOTE:** It may be necessary to install the jam nut on the opposite side of the kickstand if additional adjustment is required.



## WINCH LINK INSTALLATION AND ADJUSTMENT:

Assemble the winch link (18) to the plow frame as shown in the figure and secure in place with the M10 nylon nut (6). Attach the plow assembly to the unit and connect the winch cable to the winch link (18). Run the winch rope in until the auto stop is activated or until the winch hook makes contact with the roller fairlead. Lift up on the blade to determine if the plow system is at max lift height. The winch link should be adjusted so the plow system is at maximum lift height when the winch auto stop engages or the hook makes contact with the roller fairlead. Lower the plow system to the ground and loosen or tighten the nut (6) on the bottom end of the winch link as required. Repeat the above steps to ensure the maximum lift height has been achieved.

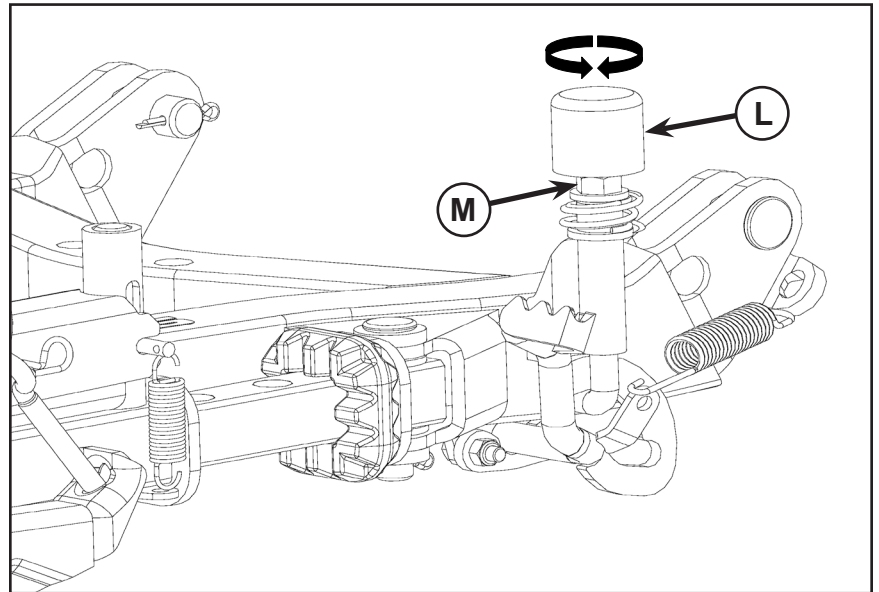


**Caution:** Always lower the plow system to the ground prior to making adjustments to avoid injury.

## ADJUSTMENT OF THE AUTO RETRACTING KICKSTAND:

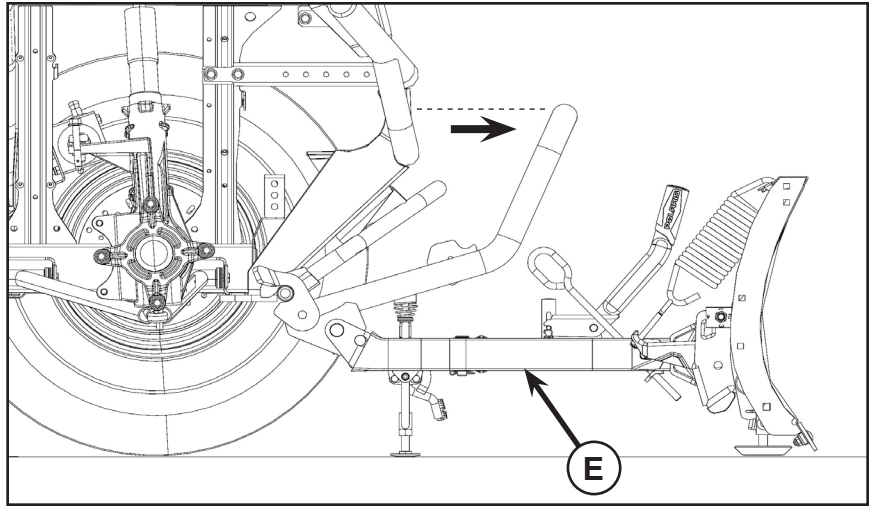
The auto retracting kickstand should be triggered when the cap of the J Rod makes contact with the bumper of the machine. This activity should take place in the last 1/3rd of the plows travel. Follow the below steps if the kickstand fails to release properly:

- Check to be sure the plow is achieving its maximum lift height by lifting up on the blade to make sure the plow is against the tops at full lift. Repeat step "Height Adjustment of Kickstand" above if adjustment is required.
- Loosen the jam nut (M) on the bottom side of the cap (L) and screw the cap in or out to achieve the desired adjustment.
- Test the kickstand assembly by putting the kickstand down and lifting the plow system with the winch to it's max lift height.
- Repeat this process until the kickstand releases in the top 1/3rd of the plows travel.
- Tighten the jam nut to secure the cap in place.

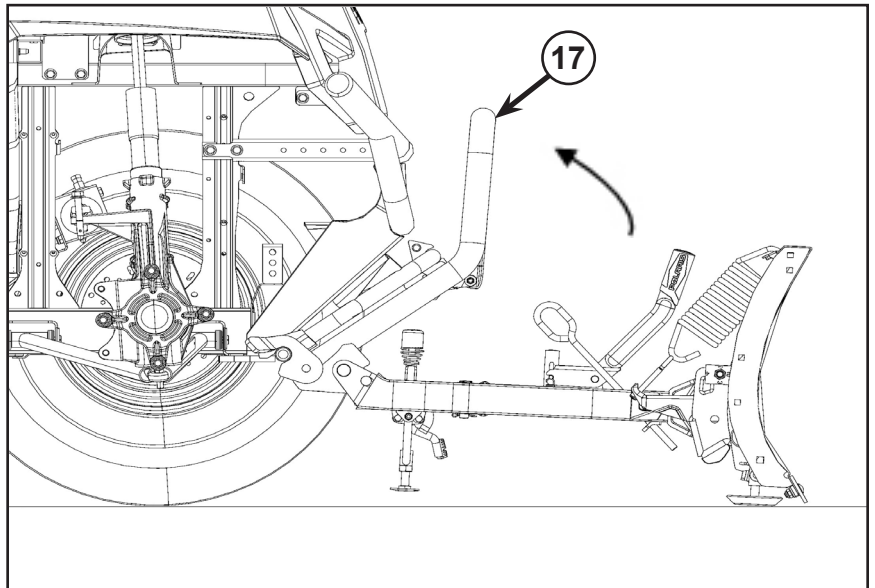


## PUSHFRAME INSTALLATION:

11. Move the vehicle towards the pushframe assembly. Make sure to align the vehicle with the pushframe (E).
12. Make sure the vehicle is fully engaged in the attachment plates on both sides.



13. Raise the hook up (17) by pulling up towards the vehicle until the opening of the hook assembly latches securely around the top tube of the mount plate. If the hook up does not engage completely, check to be sure the the lower latch point of the hook up is fully seated on the lower pin of the mount plate. Check for snow or ice accumulation that could cause misalignment of the system.

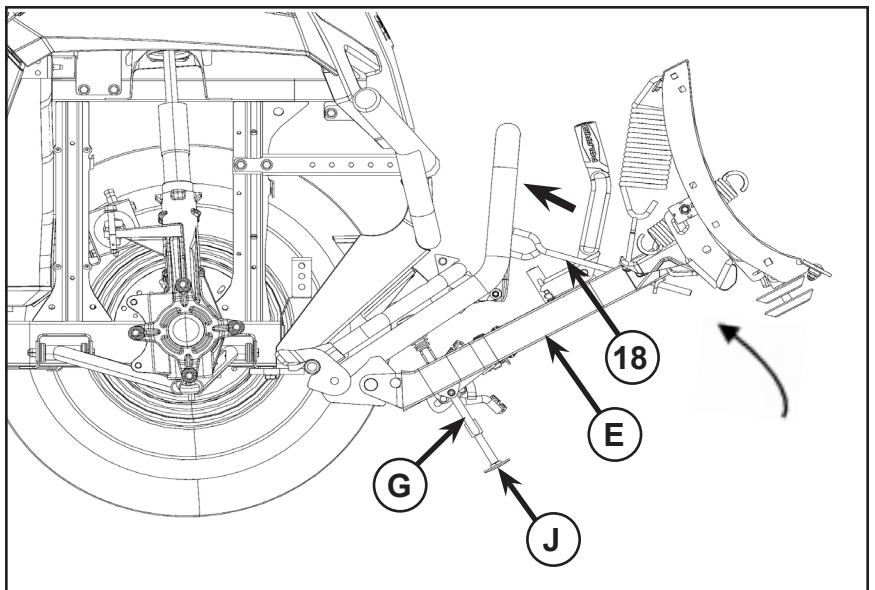


14. Once the pushframe (E) is attached to the vehicle, the kickstand (G) should be slightly raised. The kickstand shoe (J) should not touch the ground. If it touches the ground, the kickstand shoe is not adjusted to the proper height. Repeat steps of adjusting the height of the kickstand.

15. Connect the hook of the winch onto the winch link (18) (winch link supplied in mount plate kit).

16. Use the winch to raise the pushframe (E) until the kickstand release lever engages and the kickstand (G) is lifted automatically. The blade should be in the top 1/3rd of its travel when the kickstand retracts.

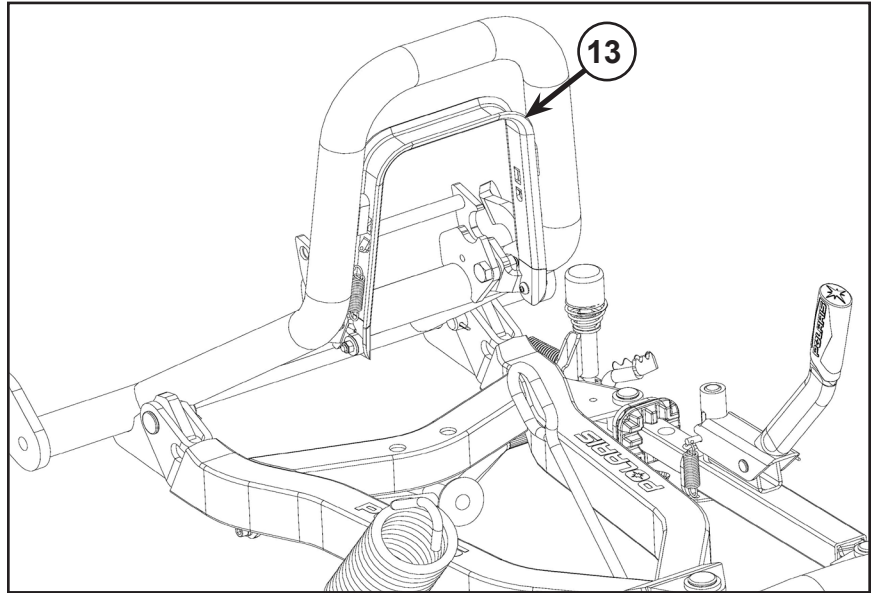
**NOTE:** Refer to the kickstand adjustment section for proper adjustment procedure if the kickstand fails to retract.



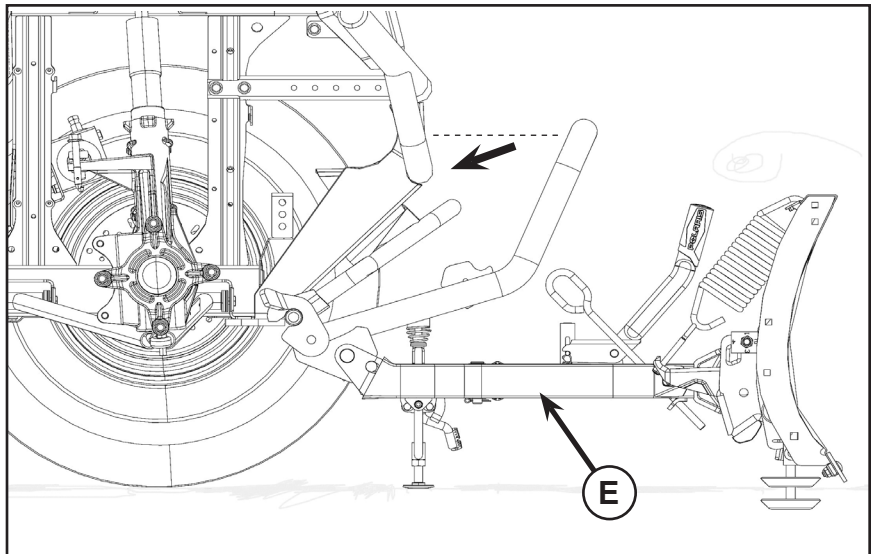


## PUSHFRAME REMOVAL:

17. Lower the pushframe using the winch until the blade touches the ground and the winch cable tension is fully released. Remove the hook of the winch from the winch link (winch link supplied in mount plate kit).
18. Lower the kickstand until the locking mechanism engages. At that time, the kickstand shoe should not touch the ground. If it touches the ground, the height of the kickstand must be adjusted.
19. Pull the release handle (13) and hold the handle (13) while lowering the hook up down until it stops. At that time the system is disengaged from the vehicle

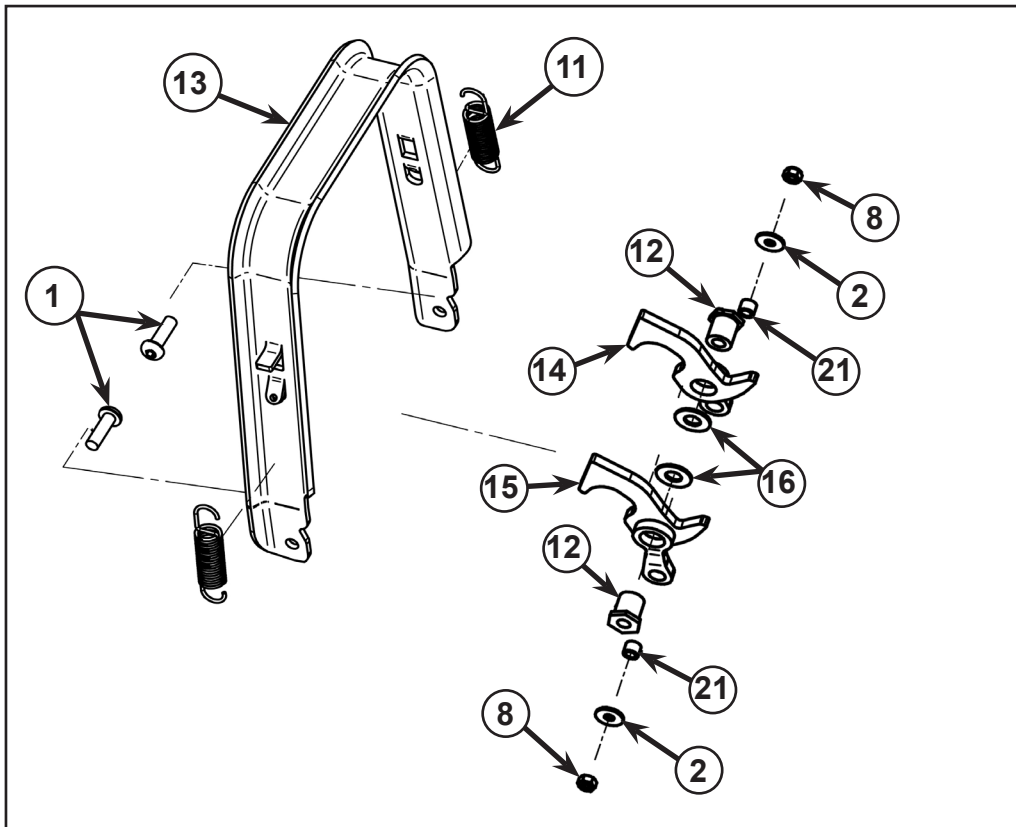


20. Retract the winch cable.
21. Slowly back the vehicle in a straight line up until it is no longer in contact with the pushframe (E).

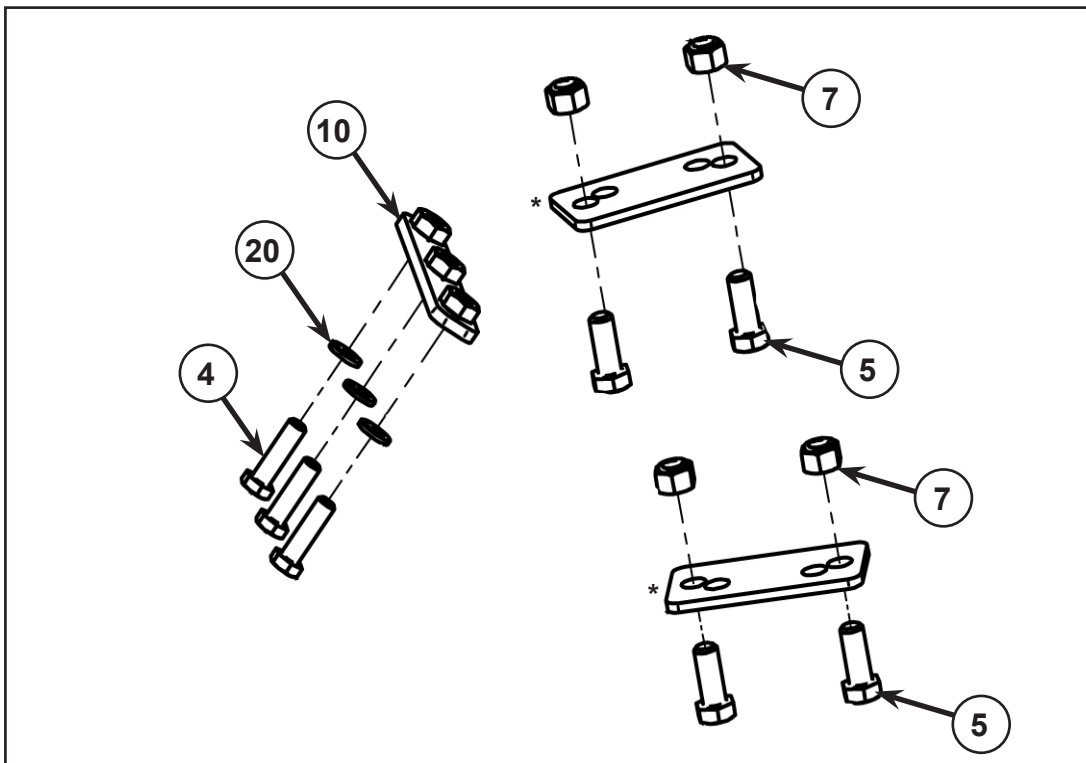


See table on page 2 for a complete part description.

**Plow Release Handle  
Kit (2204828)**

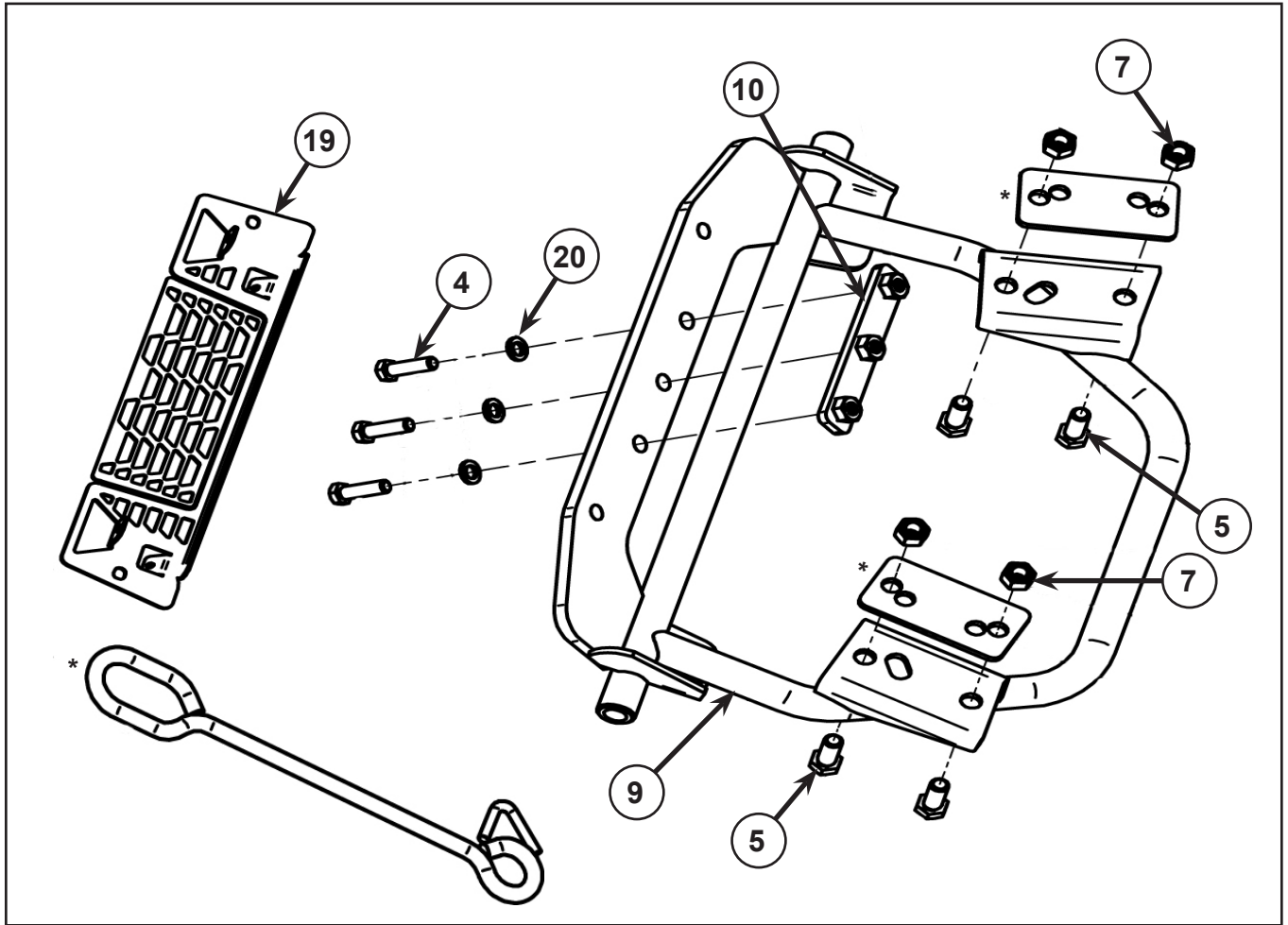


**Plow Mount Hardware  
Kit (2204831)**



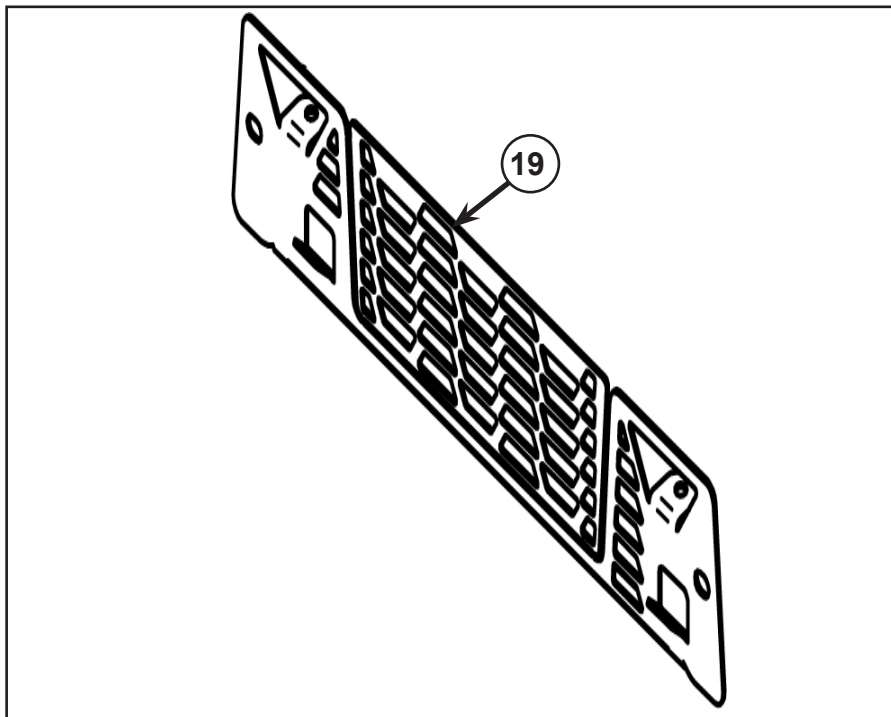
**NOTE:** Items identified with \* are not used in this application.

Mount Plate Kit  
(2879105)

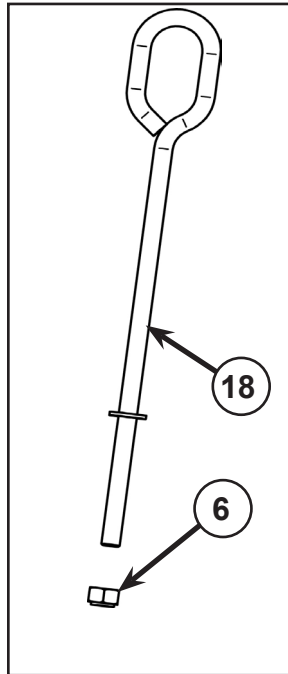


NOTE: Items identified with \* are not used in this application.

Grille Kit (5257056)



**Winch Link Kit  
(2205057)**



**Mid Mount Kit  
(2205057)**

