

PASSENGER GAUNTLET KIT



P/N 2883573

APPLICATION

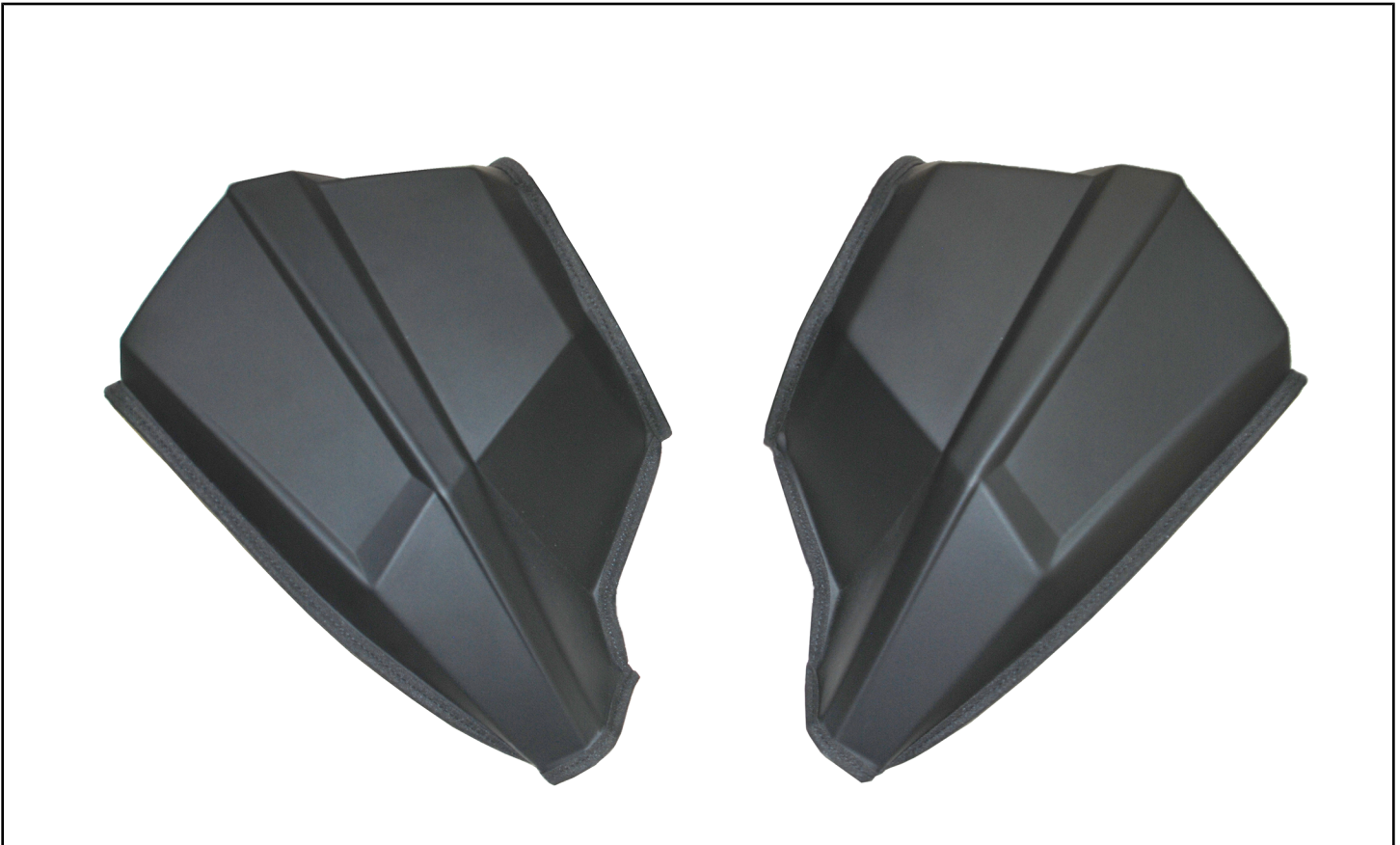
Verify accessory fitment at Polaris.com.

BEFORE YOU BEGIN

Read these instructions and check to be sure all parts and tools are accounted for. Please retain these installation instructions for future reference and parts ordering information.

KIT CONTENTS

This Kit includes:



REF	QTY	PART DESCRIPTION	PART NUMBER
1	1	Passenger Gauntlet - LH	2688856
2	1	Passenger Gauntlet - RH	2688857
	1	Instructions	9928775

TOOLS REQUIRED

None

IMPORTANT

Your Passenger Gauntlet Kit is exclusively designed for your vehicle. Please read the installation instructions thoroughly before beginning. Installation is easier if the vehicle is clean and free of debris. For your safety, and to ensure a satisfactory installation, perform all installation steps correctly in the sequence shown.

ASSEMBLY TIME

Approximately 6 minutes

NOTE

Additional time may be required for optional steps, or to accommodate other installed accessories.

INSTALLATION INSTRUCTIONS

1. Turn key to "OFF" position and remove from vehicle.

IMPORTANT

Ensure vehicle is parked on a flat surface and is stable prior to installation.

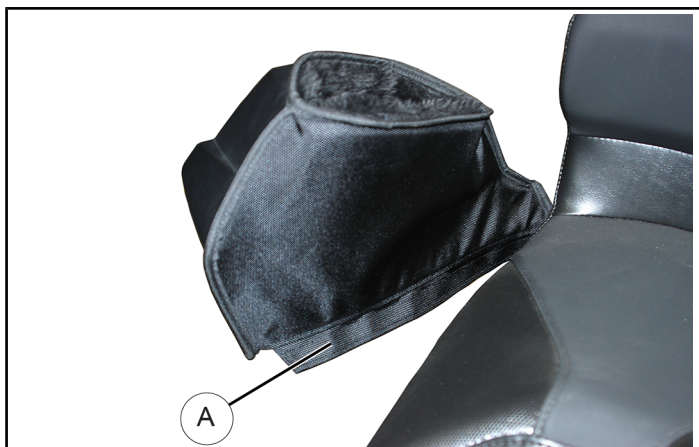
2. Open hook and loop fastener panel (A) on underside of gauntlet (2).



3. Place gauntlet (2) over the top of the passenger hand hold (B) as shown.



4. Make sure gauntlet is fully seated as shown and secure in place by pressing hook and loop fastener panels (A) together on underside of gauntlet.



5. Repeat steps 2-4 for opposite side.

FEEDBACK FORM

A feedback form has been created for the installer to provide any comments, questions or concerns about the installation instructions. The form is viewable on mobile devices by scanning the QR code or by clicking [HERE](#) if viewing on a PC.

